

SimilarityExplorer: A Visual Inter-Comparison Tool for Multifaceted Climate Data

299

Abstract

Inter-comparison and similarity analysis to gauge consensus among multiple simulation models is a critical visualization problem for understanding climate change patterns. Climate models, specifically, Terrestrial Biosphere Models (TBM) represent time and space variable ecosystem processes, for example, simulations of photosynthesis and respiration, using algorithms and driving variables such as climate and land use. While it is widely accepted that interactive visualization can enable scientists to better explore model similarity from different perspectives and different granularity of space and time, currently there is a lack of such visualization tools.

In this paper we present three main contributions. First, we propose a domain characterization for the TBM community by systematically defining the domain-specific intents for analyzing model similarity and by translating them to visualization-specific tasks. Then, we define a classification scheme that can be leveraged for combining multiple facets of climate model data in one integrated framework that allows scientists to perform multiple levels of comparison, by seamlessly switching between spatial and temporal perspectives. Finally, we present SimilarityExplorer, an exploratory visualization tool that facilitates similarity comparison tasks across both time and space through a set of coordinated multiple views. We present a detailed case study from three climate scientists who used our tool for a month for gaining scientific insights into model similarity. Their experience and results validate the effectiveness of our tool.

1. Introduction

Inter-comparison of model simulations is a critical problem in the climate science domain for understanding climate change patterns. Consensus among model results is an important metric used for judging model performance. Analysis of model output similarity and dissimilarity is a complex problem because of the multiple *facets* involved in such comparisons: space, time, output variables, and model similarity. The goal of this work is to provide an interactive visualization tool that integrates space, time, and similarity, making it easier for climate scientists to explore model relationships from multiple perspectives.

The output of our work is a result of a six-month-long interaction between visualization researchers and climate scientists, including terrestrial biosphere modelers. Modelers generally perform their analyses by looking at spatial and temporal aspects in isolation, by running scripts, such as *MATLAB* and *R* on the data and by manually setting parameters. The first step during the iterative development of our tool was to provide the scientists with an interactive interface for selecting parameters and filtering the data. This was not

sufficient as our interactions revealed that modelers needed a tool for analyzing both space and time within a single interface in order to judge multi-model similarity. Existing tools are only capable of integrating one or two facets within the visualization as pointed out by Kehrer et al. [KH13]. This is inherently challenging as preserving the mental model about space and time and maintaining symmetry in the visual representation of multiple levels of spatiotemporal granularity requires a systematic encoding and interaction strategy.

To address these challenges, we developed the SimilarityExplorer to provide a multi-faceted visual analysis of climate models, specifically, terrestrial biosphere models (TBMs). Using our tool, climate scientists were able to understand the degree of overall model similarity across time and space, and then “drill down” to explore further *where*, *when*, and *why* models were similar and different. A seamless integration and exploration of these facets in SimilarityExplorer let them confirm, reject, and form hypotheses about model similarity which were not possible before.

Our work consists of three key contributions:

1. As part of the characterization of the domain [Mun09]

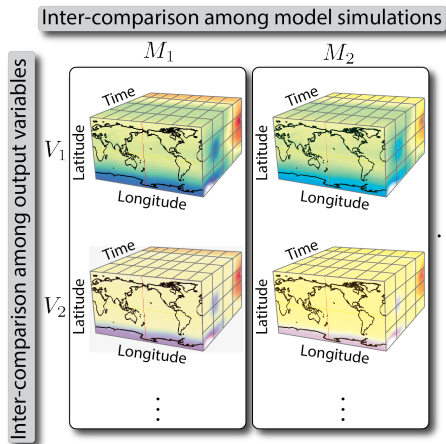


Figure 1: **Visualizing the complexity of multifaceted climate data** in terms of multiple models, regions, time and variables.

of model inter-comparison, our first contribution is a systematic presentation of the domain-specific intents of climate scientists and the corresponding facets underlying the data (Section 4).

2. We bridge the intents and facets through different visualization tasks, and perform a translation of the tasks into the visualization design through a classification scheme that informs the design (Section 5).
3. SimilarityExplorer is a tool that implements this classification. Our interactions with climate scientists were conducted before, during, and after the implementation phase for iterative refinement of the tool based on their feedback. In light of this, we present two case studies which helped elucidate and validate the benefit that scientists obtained when using SimilarityExplorer (Section 6).

2. Related Work

Visualization of spatiotemporal data has witnessed a lot of research over the years. Peuquet [Peu94] had introduced the popular triad representation framework which is a general formalization of temporal dynamics in geographic information systems. In our tool we imbibe the concepts of *when*, *where*, and *why* models are similar. The need to integrate space and time through an exploratory analysis tool was also proposed by Andrienko et al. [AAD*10]. They also proposed a visual analytics [AA13] framework for exploring spatio-temporal data through spatially referenced time series. They do not focus on a separation of space and time, which is the guiding principle in our work. There exists other approaches towards building for integrating spatial and non-spatial data [MMH*13]. Guo et al. [GCML06] proposed a generalizable visual analytics approach for integrating techniques from cartographic, visualization techniques and machine learning. That methodology is general and can be applied to spatio-temporal data. The SimilarityExplorer is focused on model inter-comparison using a similar method-

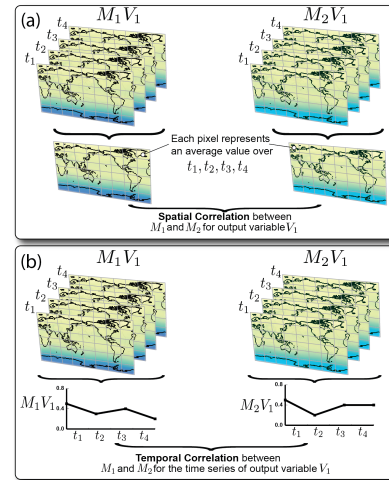


Figure 2: **Similarity computation.** Illustration of spatial and temporal correlations are computed between models M_1 and M_2 after aggregating the temporal information. The spatial granularity is preserved at the cost of temporal information, and vice versa.

ology. For addressing the needs of the climate research community, there has been some work on hypothesis generation [KLM*08] and tool development [LSL*10]. Steed et al. introduced EDEN [SST*12], a tool based on visualizing correlations in an interactive parallel coordinates plot. Their focus is on a single model and try to analyze the interdependence among variables. There also exists some general visualization tools such as Paraview [Kit], Visit [Law] and VisTrails [Vis] which offers some specialized climate visualizations but almost all of them only present the data without supporting any analysis. Those specialized packages were integrated in a provenance-enabled climate visualization tool UV-CDAT [WBD*13]. However it neither supports multi-model and multi-variate analysis, nor the dynamic linking between views. This is crucial in the case of model inter-comparison as it requires a seamless transition among different facets facilitated by intuitive interaction methods, which is implemented in SimilarityExplorer.

Although there has been a lot of research involving visualization of spatiotemporal data, most of the existing tools only integrate one or two different facets [KH13]. In the SimilarityExplorer we integrate four different facets: *space*, *time*, *multiple models* and *multiple variables*. Our adopted technique is similar in principle with Kehrer et al's work on visual analysis of heterogeneous data, multi-model scientific data with examples from climate research data [KMDH11].

Through a closely-knit collaboration with climate scientists we were able to address the need for tools that emerge from genuine and interdisciplinary collaboration [OMBE11, MMDP10], for solving the problems with such complex data.

3. Background of Model Inter-Comparison Project

We collaborated with 3 climate scientists from the Oak Ridge National Lab as part of the Multi-Scale Synthesis and Terrestrial Model Inter-comparison Project (MsTMIP). Each of them have at least ten years of experience in climate modeling and model inter-comparison. MsTMIP is a formal multi-scale synthesis, with prescribed environmental and meteorological drivers shared among model teams, and simulations standardized to facilitate comparison with other model results and observations through an integrated evaluation framework [HSM*13].

3.1. Data

The data consist of simulations from 7 different TBMs for over 20 years at monthly temporal resolution, collected over a spatial resolution of 0.5 degree. Each produces multiple output variables, of which *three* are relevant for the analysis presented here. For segmenting the globe, the scientists use 11 different eco-regions. The temporal granularity of interest to them were annual, seasonal, and monthly. As shown in Figure 1 each model can be represented by a spatio-temporal volume over latitude, longitude, and time. Since each model is associated with multiple output variables, each model can be thought of as being a vector of such volumes. The basic goal of climate scientists is to efficiently subset this array of cubes along multiple dimensions, in order to understand model similarity based on multiple facets: *when* are models similar, with respect to seasons and months, *where* are models similar, with respect to regions, *why* are models similar, with respect to the output variables.

3.2. Model Similarity

As a first step in our design study [SMM12], we discussed with the climate scientists about their existing approaches for understanding model similarity. To reduce complexity of the data, they are used to compressing space and time. It emerged that, from a temporal aspect they are mostly interested in comparing model behavior for seasons or months aggregated across all years. Especially in the TBM community they are not keen on knowing how model behavior changes over different years. In this context, they perform two distinct operations on the data for analyzing similarity from the spatial and temporal perspectives. These operations are sketched in Figure 2 and described below:

a) Spatial Correlation: For this step, as shown in Figure 2a the data is pre-processed in such a way that temporal information is aggregated but spatial granularity is preserved. For each point on the map, the average value for a time period is computed. Temporal granularity can range from *long-term mean* (value at one point is the average for all months and all years within the time period), *long-term monthly mean* (12 monthly maps, with each map representing an average month for the time period), and *seasonal mean* (four maps with each map representing an average season for the

time period). Next, correlation between maps of two models is computed using the Pearson correlation coefficient.

b) Temporal Correlation: In this case, the data pre-processing helps aggregate spatial information but preserves temporal granularity (Figure 2b). For the map at each time step, a spatially averaged or summed value is computed. Next we compute a time series, which varies based on the temporal granularity: one value for *long-term mean*, 12 values for *long-term monthly mean* and four for *seasonal mean*. At the end the models are represented by their time-series signatures. While there are multiple ways for comparing time-series signatures of two models, in discussion with the scientists, we chose correlation as the measure for temporal similarity.

4. Domain Characterization

The initial discussion about the data characteristics was followed by an analysis of the domain-specific intents through face-to-face interactions and conference calls. In this section, we present the first contribution of our work, which is a characterization of the domain-specific intents of the climate scientists and the underlying data facets.

4.1. Domain Specific Intents

We identified four major intents of the climate scientists in the context of model inter-comparison, which are as follows:

Q₁: In general, modelers would like to know the degree of spatial and temporal correlation of models with respect to any output variable.

Q₂: With multiple models, they would additionally like to know which models are similar, and when, where, and why they are similar.

Q₃: They would want to understand if different sub-regions agree or disagree with the global temporal or spatial correlations, or with the same for other sub-regions.

Q₄: The above three questions although address different aspects of model similarity, we found in our interactions, that scientists do not always trust the level of abstraction at which similarity is deduced, as there can always be anomalies that are not captured. Thus they always wanted to look at the original distribution of the data to verify their hypotheses and validate their findings.

4.2. Facets: Space, Time, Variables, Similarity

The inherent complexity involving inter-comparison of climate models stems from the multifaceted data underlying the climate models. The facets [KH13] relevant for the climate model data are space, time, variables, and similarity as shown in Table 1. *Space* and *time* also involve different levels of granularity. The different levels granularity for spatial data are global (*g*) and regional (*r*) and that for temporal data are annual (*a*), seasonal (*s*), and monthly (*m*), as shown in Table 1. Additionally, there are three output variables for each model.

Similarity among models is the other facet which can be

Tasks	Facets				Visualization Design	
	Space	Time	Variables	Similarity	Views	Comparison method
$identify(p)$ $identify(t)$ $identify(p,t)$	g/r	$a/s/m$	single	pairwise pairwise multi-way	matrix (maps) matrix (area graph) projection	explicit encoding
$compare(p,v)$	g,r	a,s,m	multiple	pairwise	matrices (map) <i>smlt</i> :maps	juxtaposition
$compare(t,v)$	g,r	a,s,m	multiple	pairwise	matrices (area graph) <i>smlt</i> :area graph	juxtaposition
$associate(p)$ $associate(t)$	r	s,m	single	multi-way, pairwise pair-wise	parcoords, matrix time-series, matrix	juxtaposition superposition
$distribution(p,v)$ $distribution(t,v)$	r	s,m	multiple	multi-way, pairwise pairwise	parcoords time-series	juxtaposition superposition

p : Space t : Time v : Variables g : global r : regional a : annual s : seasonal m : monthly *smlt*: small multiples

Table 1: **Translating tasks into visualization design through a classification scheme.** The eventual visualization design is based on the different facets. For this study, model output has different space and time granularity which each need to be accounted for in the visualization design.

classified based on the following perspectives: i) pairwise: in this case scientists are interested in observing similarity between each pair of models and ii) multi-way: in this case scientists are interested in observing similarity among all models taken together, and iii) one-to-many: in this case scientists might choose one model as a reference. Our collaborators revealed that the third option is rarely used in comparison of TBMs, since no model is known a priori to be any better as a “reference” than any other. As a result we did not implement this option in the tool.

5. Visualization Tasks and Design

The next step in our study was to connect the intents and facets though concrete visualization tasks and subsequently translate the tasks to visualization design. This led to our second contribution: a classification scheme for integrating tasks, facets, and design (Table 1).

5.1. Tasks

For identifying the tasks, we took inspiration from Zhou and Feiner’s taxonomy [ZF98], among which *identify*, *compare*, *associate*, and *distribution* are relevant here. Notably, the transition from Q_1 to Q_4 also indicates increasing complexity of the visualization tasks, which we describe below. In table 1 the abbreviation after task name indicates the facet they operate upon.

Identify: The intent Q_1 , that is understanding model-model similarity is reflected in SimilarityExplorer by three variants of the identification tasks: finding the degree of spatial correlations among models ($identify(p)$), finding the degree of temporal correlation among them ($identify(t)$), and also finding the degree of overall spatio-temporal correlation ($identify(p,t)$). While the first two tasks reflect pairwise similarity, the last one expresses multi-way similarity. In Table 1, the symbol / reflects an *OR* operation. So in case of the iden-

tification tasks any granularity of space (g/r) and time ($a/m/s$) can be selected using different filters.

Compare: The intent Q_2 , that is understanding output-output similarity is reflected in SimilarityExplorer by the comparison tasks: comparing the degree of spatial correlation ($compare(p,v)$) and temporal correlation ($compare(t,v)$) among multiple output variables. These tasks can involve multiple selections of granularity of space and time indicating an *AND* operation as shown by the *comma* (g,r and a,s,m). For example, global correlation of models with respect to one output variable can be compared with the regional correlation.

Associate: The intent Q_3 involves combining the understanding of similarity by analyzing the region-wise anomalies and trends for the models. This task applies to both spatial ($associate(p)$) and temporal correlation ($associate(t)$) for which different views are instantiated. These involve mainly drill-down and brushing operations and are performed at the regional granularity of space and monthly or seasonal granularity of time.

Distribution: The intent Q_4 is reflected by the distribution task that helps provide a multi-way perspective on behavior of regions with respect to multiple models ($distribution(p,v)$), and on pairwise model-model relationships for all regions. Scientists could also get additional information about outlying regions and models using this task, which allows exploration at a greater level of detail than the other tasks. This task also involves drilling down to the temporal distribution of a pair of models ($associate(t,v)$).

5.2. Visual Encoding Challenges

In this section we describe the different challenges related to translating the tasks to different aspects of visual encoding and justify our design choices in the process.

Separating space and time: All the tasks described above

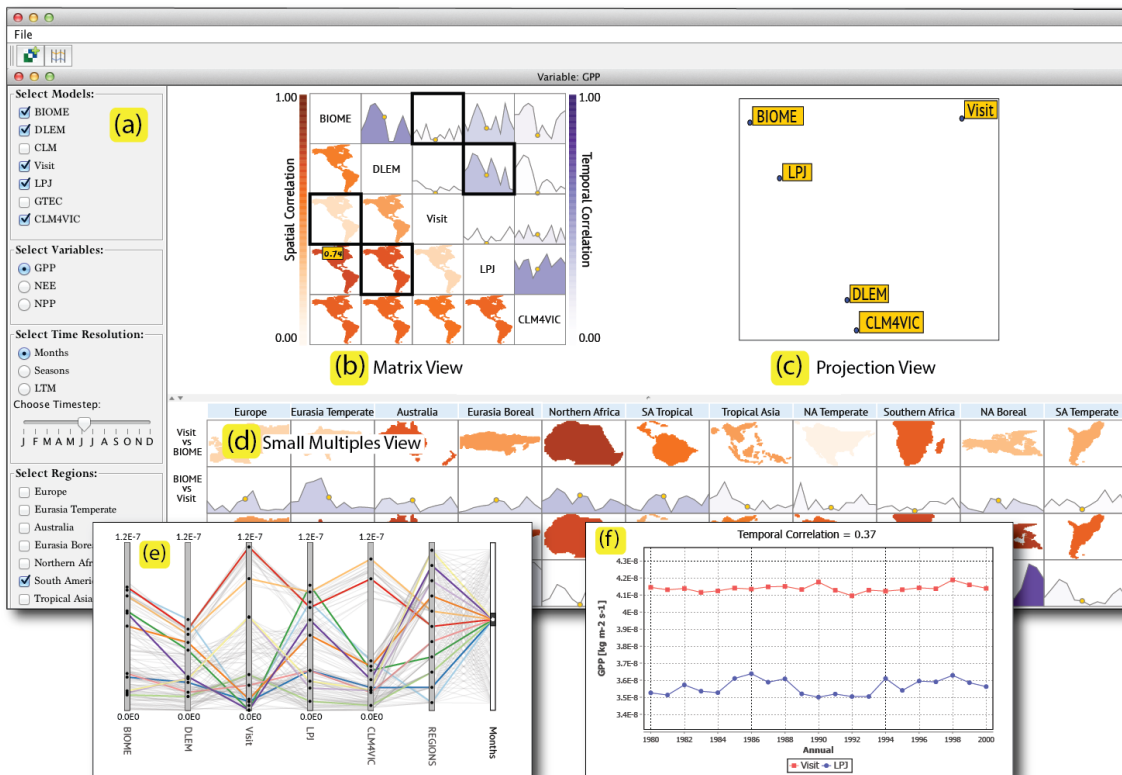


Figure 3: **SimilarityExplorer** is composed of a set of filters (a), meta views (b, c, d) and data views (e, f). The meta views are b) a matrix view for showing pairwise similarity, c) a projection view for showing multi-way similarity, and d) a small multiples view for showing region-wise spatio-temporal similarity. The data views are: e) a parallel coordinates view for showing multi-model distribution of each variable, and f) a time series for showing temporal distribution of any pair of models.

required us to separate as much as possible, the aspects of time and space in the features of SimilarityExplorer. Of course, in the final analysis, time and space are inextricably linked. One climate scientist remarked that he wanted *no time* in his analysis, only space. Upon reflection, we realized that what this user really wanted was more like *all time*, i.e., spatial correlations which had been composited over the entire time interval, with no temporal subsetting. In this sense, then, the spatial correlations shown are composited over time, and the temporal correlations are composited over space. This is reflected in the encoding by having a visual separation between the spatial side and temporal side; but at the same time, decomposition of space into time or vice versa, is separated by interactions such as brushing, filtering and additional views that show different levels-of-detail.

Preserving the mental model: This was a critical design issue due to the interplay between space and time, and the need to *associate* them in a holistic view [AAB*10]. Both geographical maps and time-series could be used to represent variation of either the spatial or temporal correlation. In one of the interactive sessions we presented mock-ups that used time-series to represent the variation of both spatial

and temporal correlation. But without consistent visual cues linking the representation to space or time, they were confused: “I like this but I have to wrap my head around what the visualization is telling me: is it space or is it time? It will be much better if I don’t have to process this in my mind”

We resolved this issue by collectively taking a design decision: for temporal correlation we would display the variation of the correlation over time by displaying a time-series that adapts to the temporal granularity (annual, months, seasons). On the spatial side, we would display maps showing spatial correlation for the selected time step. Thus we use consistent spatial cues in the form of maps and temporal cues in the form of time series (Figure 3b,d). By brushing over time, we would see the change in spatial correlation as the displayed map adapts to the selected time step.

Retaining symmetry while drilling down: Preserving a symmetrical relationship among the different granularity of space and time through consistent visual representation was essential for scientists to keep track of any change that occurred. The change of spatial granularity is reflected by transforming the maps to represent the selected regions. The change of temporal granularity is reflected by transforming the number of steps in a time series (Figure 4). Another im-

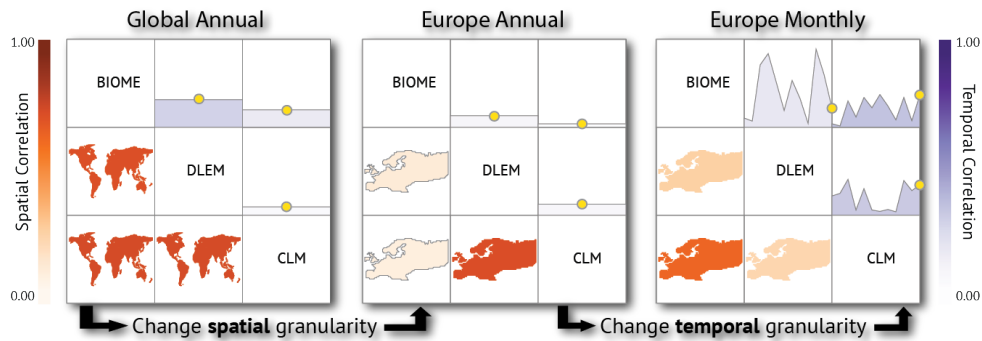


Figure 4: **Preserving the mental model and symmetry about spatial and temporal similarity** through use of *maps* for representing space and use of *area graphs* for representing time, and by reflecting the change in granularity on both sides.

portant factor is the associativity of the operations: any spatial operation adapts the temporal similarity to reflect the selected region and any temporal operation adapts the spatial side to represent the correlation for a particular time step.

5.3. Comparison methods

Facilitating visual comparison among the models and output variables is one of the main goals of this work. We followed Gleicher et al.'s taxonomy [GAW*11] of visual comparison methods for guiding the representation of the different aspects of similarity and the eventual placement of the different views. As shown in Table 1, the three comparison methods that are used are explicit encoding, juxtaposition and superposition. Explicit encoding is used to encode the degree of similarity among the different views with the help of correlation metrics. For comparison tasks multiple views are juxtaposed next to each other. We represent multiple time series by superposing them in the same view (Figure 3f). Different interaction mechanisms like filtering, brushing, linking, and drilling-down allow scientists to browse through the multiple perspectives of similarity.

6. SimilarityExplorer

Our third contribution is the design of the SimilarityExplorer, an exploratory visualization tool for analyzing multifaceted, multi-granularity, climate model similarity. This design was guided by the domain characterization presented in Section 4, and was informed by the classification scheme described in Section 5. The scientists' analysis needs motivated our design decision of using multiple linked views [Rob07], a visualization approach that is appropriate for flexible analysis of multifaceted data. There is an implicit hierarchy [Shn96] in the type of views in SimilarityExplorer, which are *similarity views* and *data views*.

6.1. Similarity View

With the help of similarity views, we explicitly encoded spatial and temporal correlation between models, based on the computation we had described in Section 3.2. The different similarity views are described below:

Matrix View: A model is a primary unit of comparison. Our collaborators needed a view that would show both spatial and temporal correlation for the models in one integrated view, that would be flexible enough to adapt to different granularity of space and time. We took inspiration from the multi-form matrix [MXH*03] designed by MacEachren et al. and designed a matrix view that reflects pairwise similarity between models (Figure 4). In keeping with the idea of preserving the mental model about space and time, it is divided into two halves across the diagonal: the cells in the lower triangle represent the pairwise spatial correlation through color-coded maps and the cells in the upper triangle represents the temporal correlation between two models. The color coding uses a continuous color map([col11]) and reflects the degree of correlation, with orange for correlations on the spatial side and purple for correlations on the temporal side. The color map adapts to the range of correlation values: if there are negative correlations, a divergent color map is used.

Scientists can perform the following tasks using the matrix as shown in Table 1: i) *identification* tasks by filtering the view by different regions or time and ii) *comparison* tasks launching multiple matrices of different variables (Figure 6). For the latter case, we could have encoded a derived statistic that would explicitly encode the average correlation based on multiple variables, in a single matrix. However, the scientists were interested in analyzing the high or low correlations for the individual variables. Thus we use the option of juxtaposing multiple matrices for the different variables.

The effect of changing spatial and temporal granularity are shown in Figure 4. The initial view shows the view for global, annual correlation. On selection of a sub-region, i.e., Europe, maps for Europe are shown on the spatial side, while the temporal side gets updated to show the annual average correlation for Europe. On selection of seasonal granularity, the area graph gets updated to a time-series representing the four seasons and shows the maps for the selected season. Thus spatial and temporal operations are symmetrical: they affect both sides of the matrix and the color-coding reflects the correlation for the selected time step.

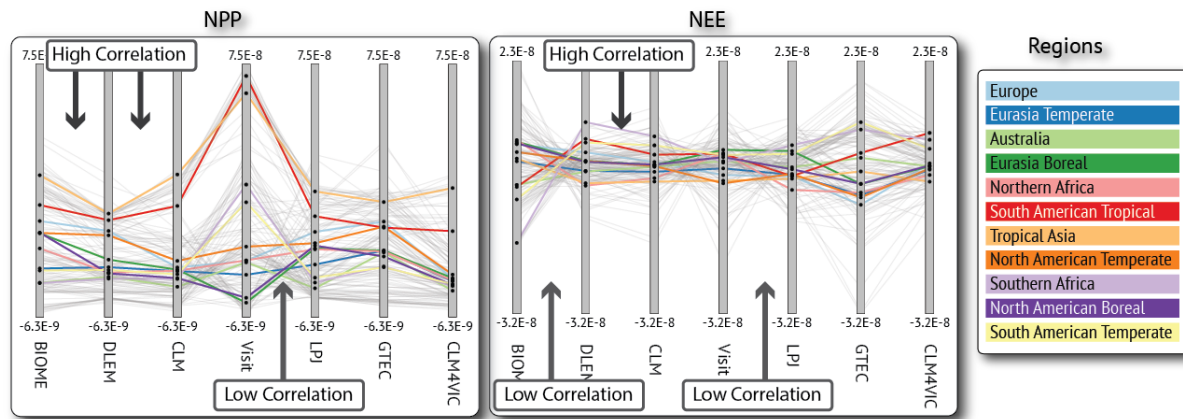


Figure 5: **Data View: Parallel Coordinates.** The ability to examine the region-wise range and distribution of variables enables climate scientists to relate the meta views to the patterns in the data view, i.e., parallel coordinates, and additionally, find clusters and outliers. For NPP, we can see a cluster of polylines for the regions South American Tropical and Tropical Asia for all models, indicating multi-model similarity for those regions.

Projection View: After presenting the matrix view to our collaborators, they felt the need for representation which gave a high-level overview of *all* models with respect to each other. This prompted us to design the projection view (Figure 3c) that shows multi-way similarity among models. Thus, it overcomes the limitation of the matrix view, which is only able to show pairwise patterns. As mentioned in Table 1, the projection view is used to mainly *identify* which models are more similar, triggering the subsequent analysis steps for exploring the reason for similarity.

The projection view is generated by using the spatial or temporal correlation between models as the distance metric and then using multidimensional scaling (MDS) for mapping the data points onto a two-dimensional scatter plot. The physical proximity of models encodes their overall similarity. Initially, some of our collaborators were confused by the projection view but on seeing the merits of getting a multi-way overview of similarity they became more appreciative of its utility. One of them commented: “*The axes have no meaning here and we are not used to seeing this, but I really like the all-way comparison we can perform which we could not do before*”. This view adapts to different selections of time steps or regions.

Small Multiples View: The small multiples ([VDEVW13], [TGM83]) view as shown in Figure 3d supports drilling down into the correlation patterns for each individual region. The drill down operation can be initiated from both the spatial side and temporal sides of the matrix: drill down from the spatial side shows a map representing spatial correlation for a region and a selected time step; and that from the temporal side shows time series representing variation of temporal correlation for a region. One of the design options was to show a global map for the spatial drill down, with individual regions being color-coded based on spatial correlation between two models. However, this would not have been sym-

metrical with the temporal side, as there would be a map for each time-step and it is visually complex to represent so many maps, and still preserve the mental model about the relationships.

Using this small multiples view, scientists can perform several comparisons: i) by selecting a cell within a matrix the region-wise spatial and temporal correlation for that pair is shown, which lets them compare anomalies between global and regional patterns, ii) by comparing across space and time, scientists can understand the cause of anomalies, and iii) by comparing these small multiples for different variables, scientists can hypothesize about which output variables affect similarity of models across different regions.

6.2. Data View

Using the data view scientists can drill down to the distributions of different variables and gain information about outliers which the similarity views might not show. Below we describe the data views:

Parallel Coordinates: For each output variable, we use parallel coordinates (Figure 5) for enabling scientists to analyze the multi-model similarity based on the region-wise distribution of the variable. In discussion with the scientists, we found that multivariate relationships among the different output variables are not of interest in their analysis. Instead of modeling parallel coordinates conventionally, where variables are mapped on to the vertical axes and data objects are mapped to polylines, we use one parallel coordinates plot per variable. We use each vertical axis to represent a model and a polyline connecting the different axes represents the value of a variable for a given region. We compute a global scale across all models, for mapping the values so that they are comparable. The regions are represented by a categorical color scale. The number of data points, that is the number of polylines, depends on the temporal granularity selected. For

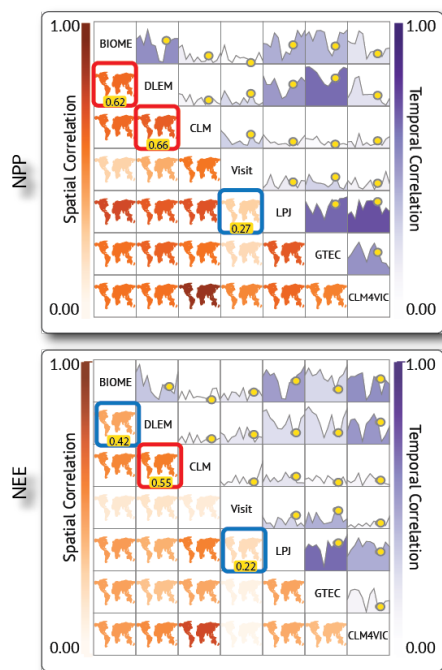


Figure 6: **Comparing multiple output variables** and analyzing their distribution (Q2, Q4)

annual correlation, there is only one polyline per region, for seasons there are four, and in the case of the lowest level of temporal granularity, months, there are twelve polylines for each region.

Brushing by time and region allows the scientists to look at only specific instants of time, a few regions, or both. By observing the trajectory of polylines, scientists could perform a multiway comparison of region-wise distribution across models. By linking the parallel coordinates with the matrix view, they can also *associate* the degree of correlation among models with the data distribution across the different regions. In case of comparison of multiple variables, multiple parallel coordinates plots can be instantiated.

Time Series: The temporal correlation represented by the area graph in the matrix is based on a pair of time-series for each time-step. Since correlation is just one of the ways of representing the relationship between two time-series, the scientists were also interested in looking at the original time-series to find any additional information, like the high or low temporal distribution, or any anomalies. Based on this requirement, we designed a time series view that shows the temporal distribution of any variable for a pair of models. The view is instantiated when any cell on the temporal side of the matrix is selected (Figure 3f).

7. Case Study and Evaluation

We describe the features of the SimilarityExplorer with two different scenarios that our climate scientist collaborators used for analyzing model similarity.

7.1. Understanding Output-Output Similarity (Q_2, Q_4)

The climate scientists wanted to compare how models behave with respect to two output variables: Net Primary Productivity (NPP) and Net Ecosystem Exchange (NEE) for the month of September. Considered to be two of the most important “vital statistics” of ecosystems, NPP represents the amount of productivity that is available for growth, while NEE reflects the input/output balance of carbon to and from the ecosystem. Both output variables are critical for understanding the atmospheric carbon cycle. As shown in Figure 6, all the models seemed to be more spatially correlated with respect to NPP (on the top) than NEE (on the bottom). This prompted the scientists to look at the region-wise distribution of the variables for confirming this. The parallel coordinates plot for NPP (Figure 5, on the left) showed a high number of parallel lines between highly correlated models like BIOME–DLEM and DLEM–CLM. But the high correlation for BIOME–DLEM is absent for NEE (Figure 5, on the right), where lines are more scattered in different directions, reflecting the different input/output balance points for carbon across ecosystems in different regions.

Additionally, by using parallel coordinates plot, the scientists found that NPP (Figure 5, on the left) shows higher spread among the values than NEE (Figure 5, on the right). The high spread and high values of NPP for the Visit model appear to be outliers. The scientists concluded that these outlying regions were causing the Visit model to be quite different from the rest. This can also be seen in the matrix plots, by the consistently low spatial correlation between Visit and most of the other models, for both variables. However, for NEE, the distribution for Visit is identical to the distribution for the other models: in this case the lack of correlation causes Visit to be different from the rest.

The outlier regions, Tropical Asia and South American Tropical, appeared to be similar for all the models, as shown by the clustered polylines for NPP. The scientists confirmed that this was an expected pattern for tropical regions for NPP; such a pattern was expected to be absent for NEE, which was also confirmed by observing the parallel coordinates plot.

By using SimilarityExplorer the climate scientists were thus able to discover that the models had better agreement for tropical areas where there is little seasonality in growing conditions, like temperature. The models had lower agreement for temperate and boreal ecosystems that have distinct and more variability in growing conditions. One of our collaborators commented that “*this would allow them to develop hypotheses on performing additional experiments*” and that “*the free-style nature of the exploration lends well to shift from one variable to another and support root-cause analysis*”.

7.2. Exploring Model-Model similarity (Q_1, Q_3)

Gross Primary Productivity (GPP) is arguably the most important ecosystem variable, indicating the total amount of

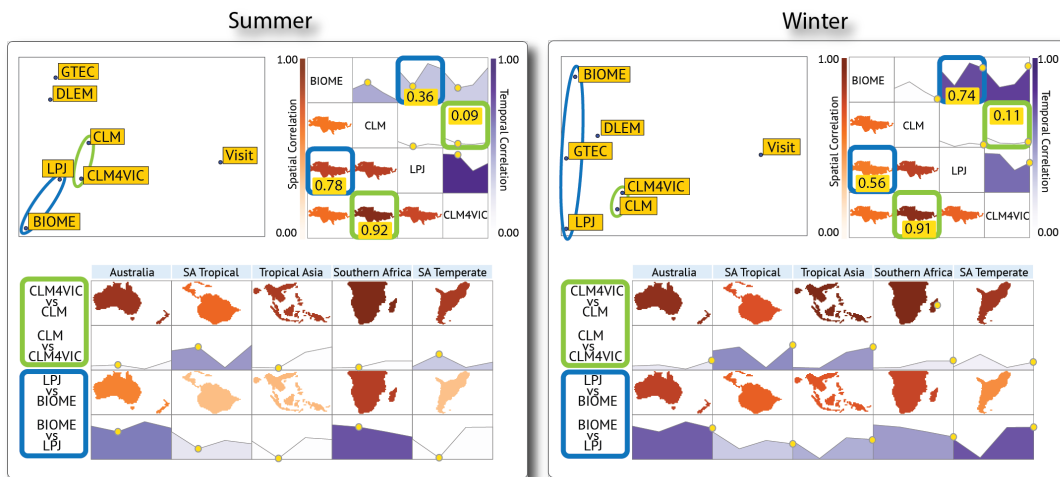


Figure 7: **Comparing model similarity for GPP and analyzing spatio-temporal anomalies for winter and summer (Q1, Q3).** Using the projection view, scientists were able to select similar models; using the matrix view they could compare spatial and temporal correlation (indicated by the numbers); and identify anomalies using the small multiples view.

energy that is fixed from sunlight, before respiration and decomposition. Climate scientists need to understand patterns of GPP in order to predict rates of carbon dioxide increases and changes in atmospheric temperature. The motivation for this scenario was to compare multiple models with respect to GPP by exploring model similarity for the Europe and Eurasia sub-regions; for the summer and winter seasons, and compare those trends with the correlations for tropical and temperate regions..

As shown in the summer view in Figure 7, the model pairs of CLM-CLM4VIC and BIOME-LPJ appear to be similar, based on their relative proximity in the projection view. They selected these models and instantiated the matrix view (Figure 7). This showed high spatial correlation but low temporal correlation for the CLM-CLM4VIC model pair for summer, as well as for winter season. For comparing the trends with the temperate and tropical regions, they used the small multiples view. The notable deviations were i) SA tropical which showed higher temporal correlation across summer and winter for this model pair, and ii) Tropical Asia which showed higher temporal correlation than Europe and Eurasia sub-regions for the winter season.

For the BIOME-LPJ pair, the models appeared to be more similar during summer than winter based on the projection view. The drop in spatial correlation during winter was confirmed by the matrix views. However, the temporal correlation was higher in winter than during summer. From the small multiples view, the scientists found that during summer the SA Tropical, Tropical Asia and SA Temperate regions had lower spatial correlation than Europe and Eurasia sub-regions; while Tropical Asia and SA Temperate had lower temporal correlation compared to the same. Both spatial and temporal correlation for this model pair seemed to increase for the winter season for the SA Trop-

ical, Tropical Asia and SA temperate region. This trend was contrary to the pattern for the Europe-Eurasia region.

By using SimilarityExplorer the climate scientists were able to visualize the interdependency between seasonality, region, and model. The fact that the SimilarityExplorer made their analysis more streamlined and efficient was validated from one of their comments: “Without this tool scientists would literally print hundreds of plots and pin them on the wall, this tool solves this problem”. They also appreciated the fact that “the tool can be easily extended for more models, the benefit is being able to do this with 20 models”.

8. Conclusion and Future Work

In this paper, we have presented SimilarityExplorer, a visual analysis tool for comparison of multifaceted climate models. We have demonstrated that by closely collaborating with a group of climate scientists, we could translate their intents into concrete visualization tasks, and subsequently those tasks into visualization design. The climate scientists are naturally more familiar and comfortable working in one of the two facets of space and time than the other. Most of their exploratory thinking, tools and analyses tend to be biased toward one of them, at the expense of investigations into the other. Because of the relative ease with which users can ‘cross the diagonal’ from one realm of analysis to the other, the scientists found that “the SimilarityExplorer offset such natural prejudices and facilitated commensurate symmetry, resulting in more complete exploration and understanding”.

We believe our approach of providing multiple perspectives on occurrence and causality of similarity is generalizable to other domains that involve spatiotemporal data, like urban data. We are looking forward to add more features to, and apply SimilarityExplorer for solving problems related to such different domains.

References

- [AA13] ANDRIENKO N., ANDRIENKO G.: A visual analytics framework for spatio-temporal analysis and modelling. *Data Min. Knowl. Discov.* 27, 1 (July 2013), 55–83. 2
- [AAB*10] ANDRIENKO G., ANDRIENKO N., BREMM S., SCHRECK T., VON LANDESBERGER T., BAK P., KEIM D.: Space-in-time and time-in-space self-organizing maps for exploring spatiotemporal patterns. In *Computer Graphics Forum* (2010), vol. 29, Wiley Online Library, pp. 913–922. 5
- [AAD*10] ANDRIENKO G., ANDRIENKO N., DEMSAR U., DRANSCH D., DYKES J., FABRIKANT S. I., JERN M., KRAAK M.-J., SCHUMANN H., TOMINSKI C.: Space, time and visual analytics. *International Journal of Geographical Information Science* 24, 10 (2010), 1577–1600. 2
- [col11] *ColorBrewer.org: An Online Tool for Selecting Colour Schemes for Maps*. John Wiley & Sons, Ltd, 2011, pp. 261–268. 6
- [GAW*11] GLEICHER M., ALBERS D., WALKER R., JUSUFI I., HANSEN C. D., ROBERTS J. C.: Visual comparison for information visualization. *Information Visualization* 10, 4 (2011), 289–309. 6
- [GCML06] GUO D., CHEN J., MACEACHREN A. M., LIAO K.: A visualization system for space-time and multivariate patterns (vis-stamp). *IEEE Transactions on Visualization and Computer Graphics* 12, 6 (2006), 1461–1474. 2
- [HSM*13] HUNTZINGER D. N., SCHWALM C., MICHALAK A. M., SCHAEFER K., KING A. W., WEI Y., JACOBSON A., LIU S., COOK R. B., POST W. M., BERTHIER G., HAYES D., HUANG M., ITO A., LEI H., LU C., MAO J., PENG C. H., PENG S., POULTER B., RICCUITO D., SHI X., TIAN H., WANG W., ZENG N., ZHAO F., ZHU Q.: The north american carbon program multi-scale synthesis and terrestrial model intercomparison project - part 1: Overview and experimental design. *Geoscientific Model Development Discussions* 6, 3 (2013), 3977–4008. 3
- [KH13] KEHRER J., HAUSER H.: Visualization and visual analysis of multifaceted scientific data: A survey. *IEEE Transactions on Visualization and Computer Graphics* 19, 3 (2013), 495–513. 1, 2, 3
- [Kit] KITWARE: The Visualization Toolkit (VTK) and Paraview. <http://www.kitware.com>. 2
- [KLM*08] KEHRER J., LADSTADTER F., MUIGG P., DOLEISCH H., STEINER A., HAUSER H.: Hypothesis generation in climate research with interactive visual data exploration. *Visualization and Computer Graphics, IEEE Transactions on* 14, 6 (2008), 1579–1586. 2
- [KMDH11] KEHRER J., MUIGG P., DOLEISCH H., HAUSER H.: Interactive visual analysis of heterogeneous scientific data across an interface. *Visualization and Computer Graphics, IEEE Transactions on* 17, 7 (2011), 934–946. 2
- [Law] LAWRENCE LIVERMORE NATIONAL LABORATORY: VisIt: Visualize It in Parallel Visualization Application. <https://wci.llnl.gov/codes/visit>. 2
- [LSL*10] LADSTADTER F., STEINER A. K., LACKNER B. C., PIRSCHER B., KIRCHENGAST G., KEHRER J., HAUSER H., MUIGG P., DOLEISCH H.: Exploration of climate data using interactive visualization*. *Journal of Atmospheric and Oceanic Technology* 27, 4 (2010), 667–679. 2
- [MMDP10] MEYER M., MUNZNER T., DEPACE A., PFISTER H.: Multeesum: A tool for comparative spatial and temporal gene expression data. *Visualization and Computer Graphics, IEEE Transactions on* 16, 6 (2010), 908–917. 2
- [MMH*13] MARIES A., MAYS N., HUNT M., WONG K. F., LAYTON W., BOUDREAU R., ROSANO C., MARAI G. E.: Grace: A visual comparison framework for integrated spatial and non-spatial geriatric data. *Visualization and Computer Graphics, IEEE Transactions on* 19, 12 (2013), 2916–2925. 2
- [Mun09] MUNZNER T.: A nested model for visualization design and validation. *Visualization and Computer Graphics, IEEE Transactions on* 15, 6 (2009), 921–928. 1
- [MXH*03] MACEACHREN A., XIPING D., HARDISTY F., GUO D., LENGERICH G.: Exploring high-d spaces with multiform matrices and small multiples. In *Information Visualization, 2003. INFOVIS 2003. IEEE Symposium on* (2003), pp. 31–38. 6
- [OMBE11] OVERPECK J. T., MEEHL G. A., BONY S., EAST-ERLING D. R.: Climate data challenges in the 21 st century. *Science(Washington)* 331, 6018 (2011), 700–702. 2
- [Peu94] PEUQUET D. J.: It’s about time: A conceptual framework for the representation of temporal dynamics in geographic information systems. *Annals of the Association of American Geographers* 84, 3 (1994), 441–461. 2
- [Rob07] ROBERTS J. C.: State of the art: Coordinated & multiple views in exploratory visualization. In *Coordinated and Multiple Views in Exploratory Visualization, 2007. CMV’07. Fifth International Conference on* (2007), IEEE, pp. 61–71. 6
- [Shn96] SHNEIDERMAN B.: The eyes have it: A task by data type taxonomy for information visualizations. In *Visual Languages, 1996. Proceedings., IEEE Symposium on* (1996), IEEE, pp. 336–343. 6
- [SMM12] SEDLMAIR M., MEYER M., MUNZNER T.: Design study methodology: reflections from the trenches and the stacks. *Visualization and Computer Graphics, IEEE Transactions on* 18, 12 (2012), 2431–2440. 3
- [SST*12] STEED C. A., SHIPMAN G., THORNTON P., RICCUITO D., ERICKSON D., BRANSTETTER M.: Practical application of parallel coordinates for climate model analysis. *Procedia Computer Science* 9, 0 (2012), 877 – 886. <ce:title>Proceedings of the International Conference on Computational Science, {ICCS} 2012</ce:title>. 2
- [TGM83] TUFT E. R., GRAVES-MORRIS P.: *The visual display of quantitative information*, vol. 31. Graphics press, 1983. 7
- [VDEVW13] VAN DEN ELZEN S., VAN WIJK J. J.: Small multiples, large singles: A new approach for visual data exploration. *Computer Graphics Forum* 32, 3pt2 (2013), 191–200. 7
- [Vis] VISTRAILS: VisTrails. <http://www.vistrails.org>. 2
- [WBD*13] WILLIAMS D. N., BREMER T., DOUTRIAUX C., PATCHETT J., WILLIAMS S., SHIPMAN G., MILLER R., PUGMIRE D. R., SMITH B., STEED C., BETHEL E. W., CHILDS H., KRISHNAN H., PRABHAT P., WEHNER M., SILVA C. T., SANTOS E., KOOP D., ELLQVIST T., POCO J., GEVECI B., CHAUDHARY A., BAUER A., PLETZER A., KINDIG D., POTTER G. L., MAXWELL T. P.: Ultrascale visualization of climate data. *Computer* 46, 9 (2013), 68–76. 2
- [ZF98] ZHOU M. X., FEINER S. K.: Visual task characterization for automated visual discourse synthesis. In *Proceedings of the SIGCHI conference on Human factors in computing systems* (1998), ACM Press, pp. 392–399. 4